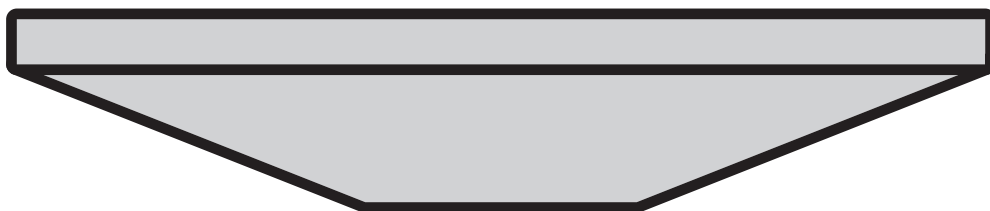


# DECKENABSORBER

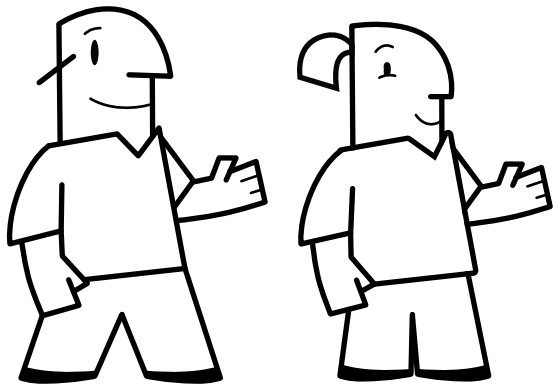
Befestigung mit Magnethalter



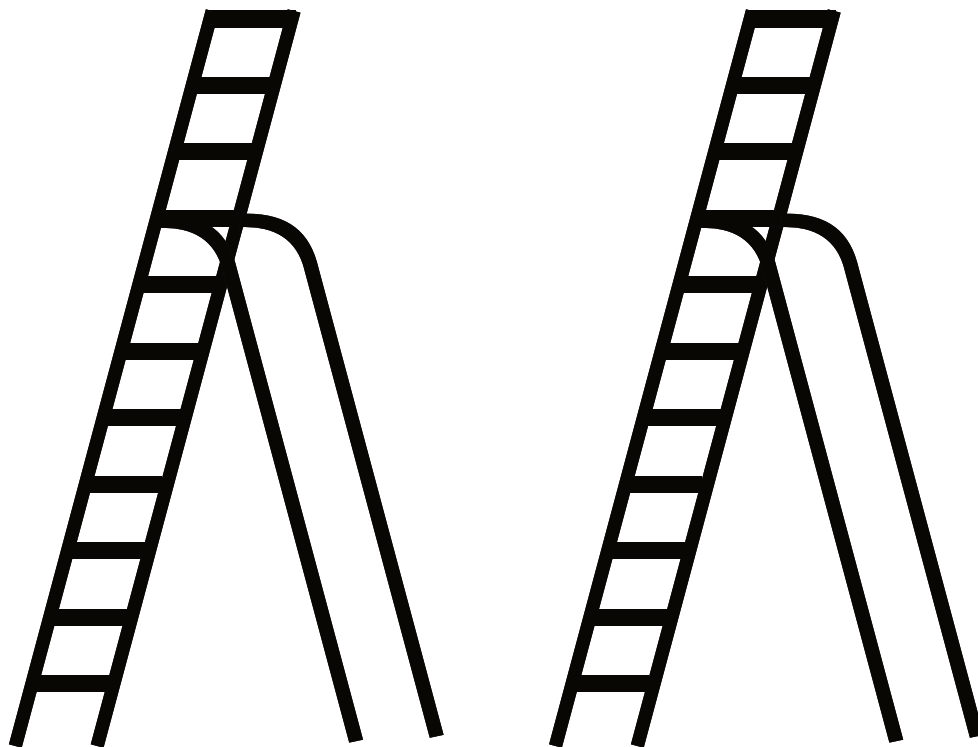
Montageanleitung



# Personen



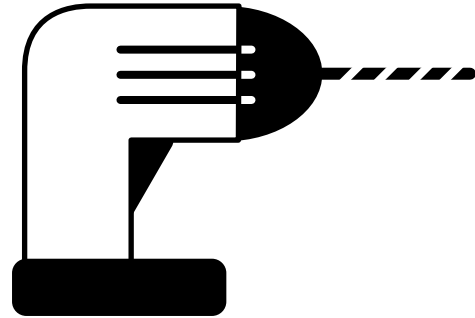
# Leitern



# Werkzeug (W)



.W1 - Bleistift



.W2 - Bohrer



.W3- Vermessungslaser



.W4 - Schraubendreher



.W5 - Schraubenschlüssel

# Deckenabsorber (.A)

.A1 - Filzbox / Nitona® mit Aufkantung (außen)



.A2 - Vlies / Bohrschablone (innen)

# Befestigungen (.B)

Decke

Fangseil

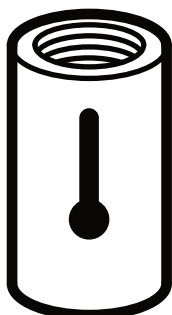
Filzbox



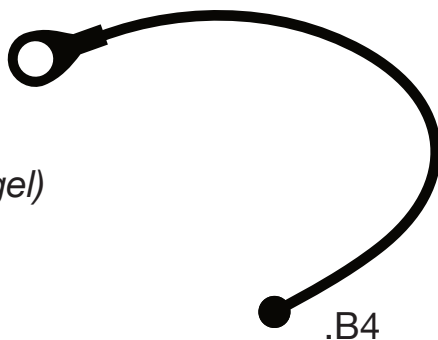
.B1



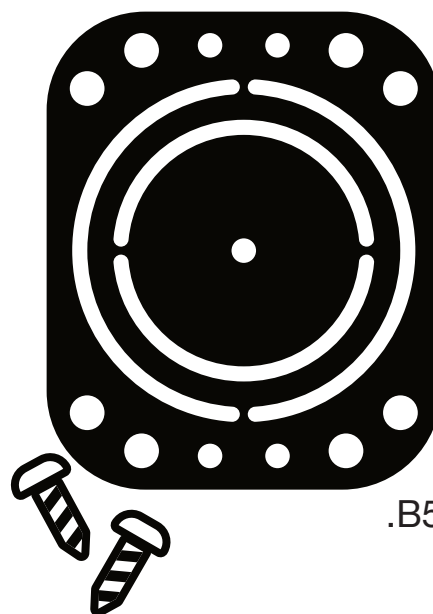
.B2 (Kugel)



.B3 (Magnet)

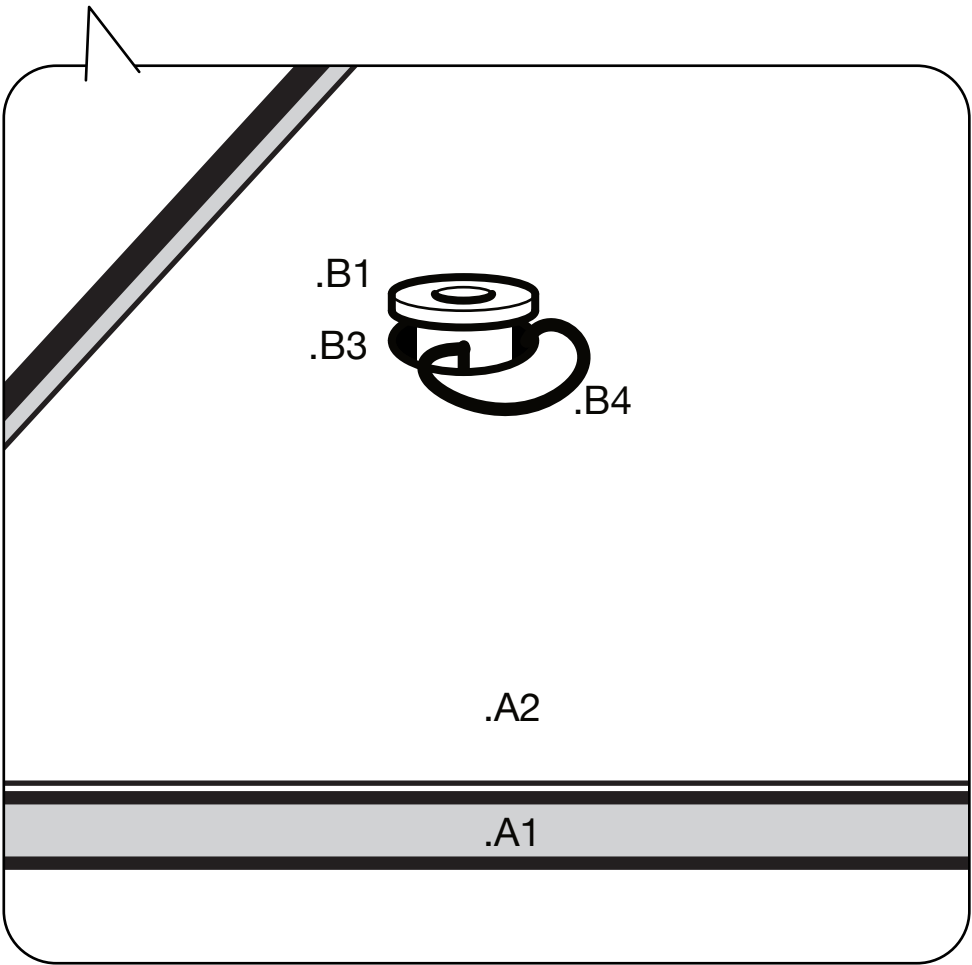
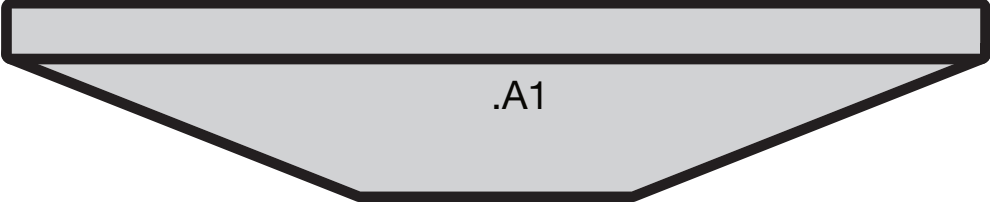


.B4

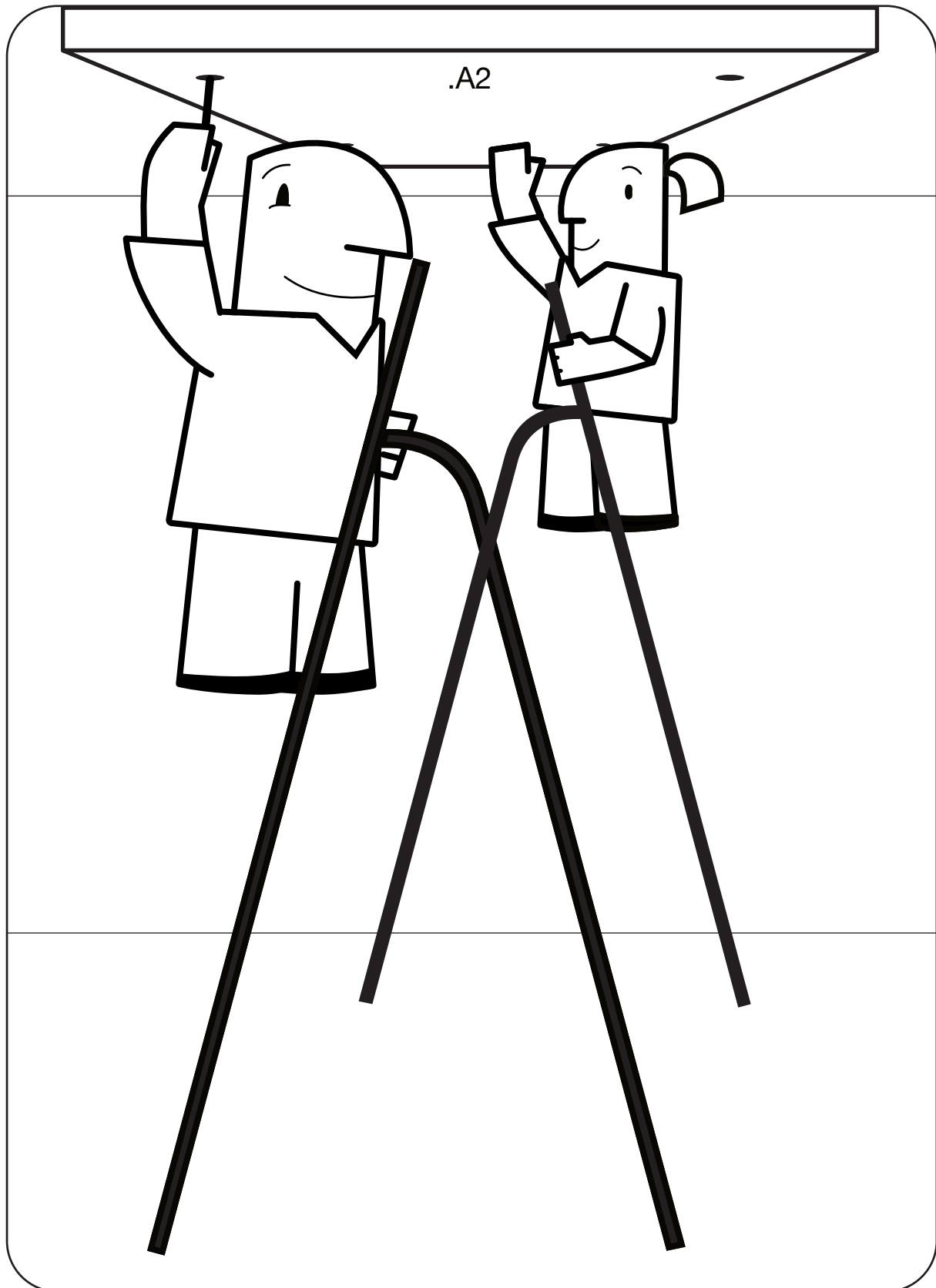


.B5

# Zielbild



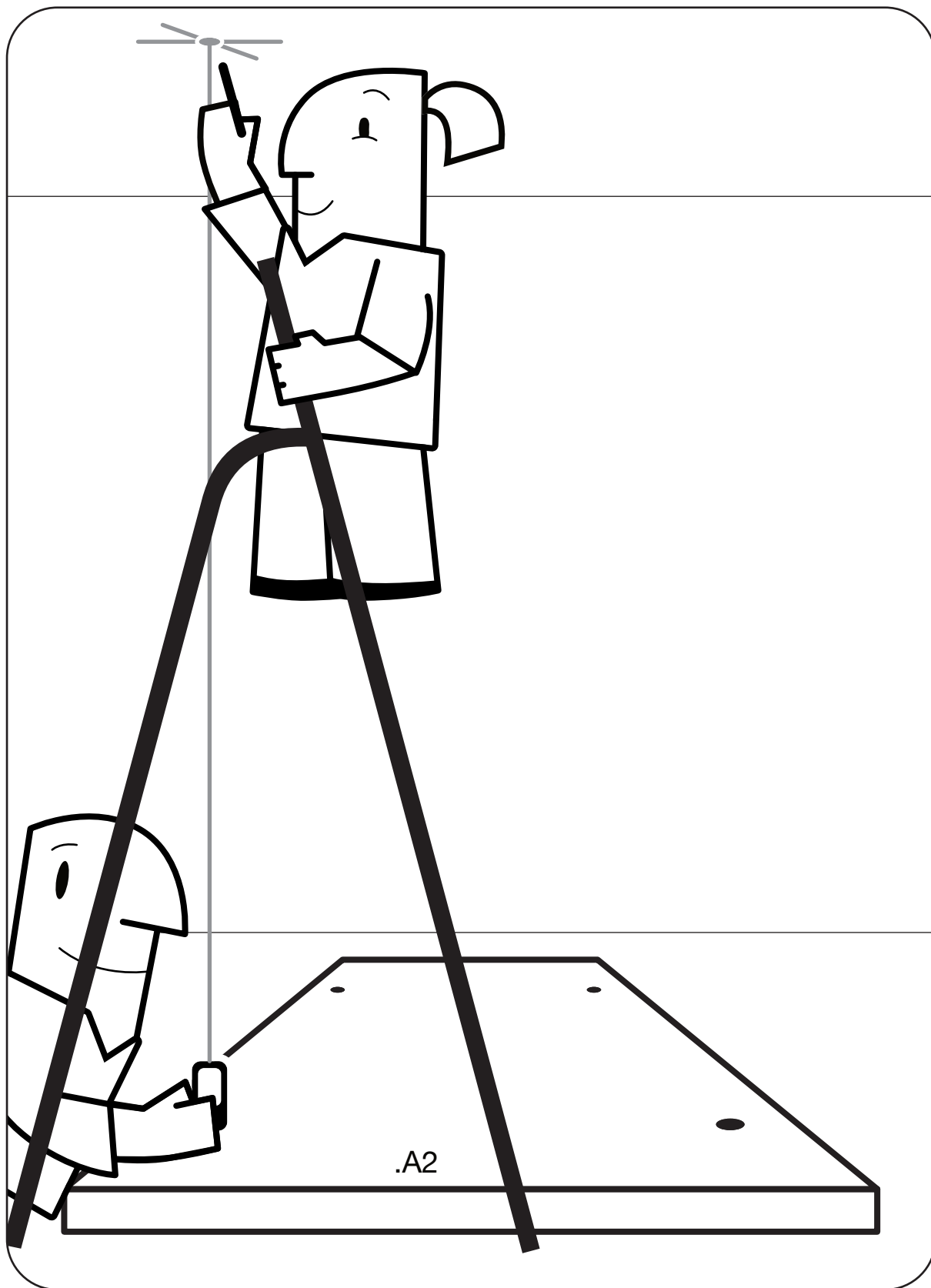
## Bohrung anzeichnen



**OD**

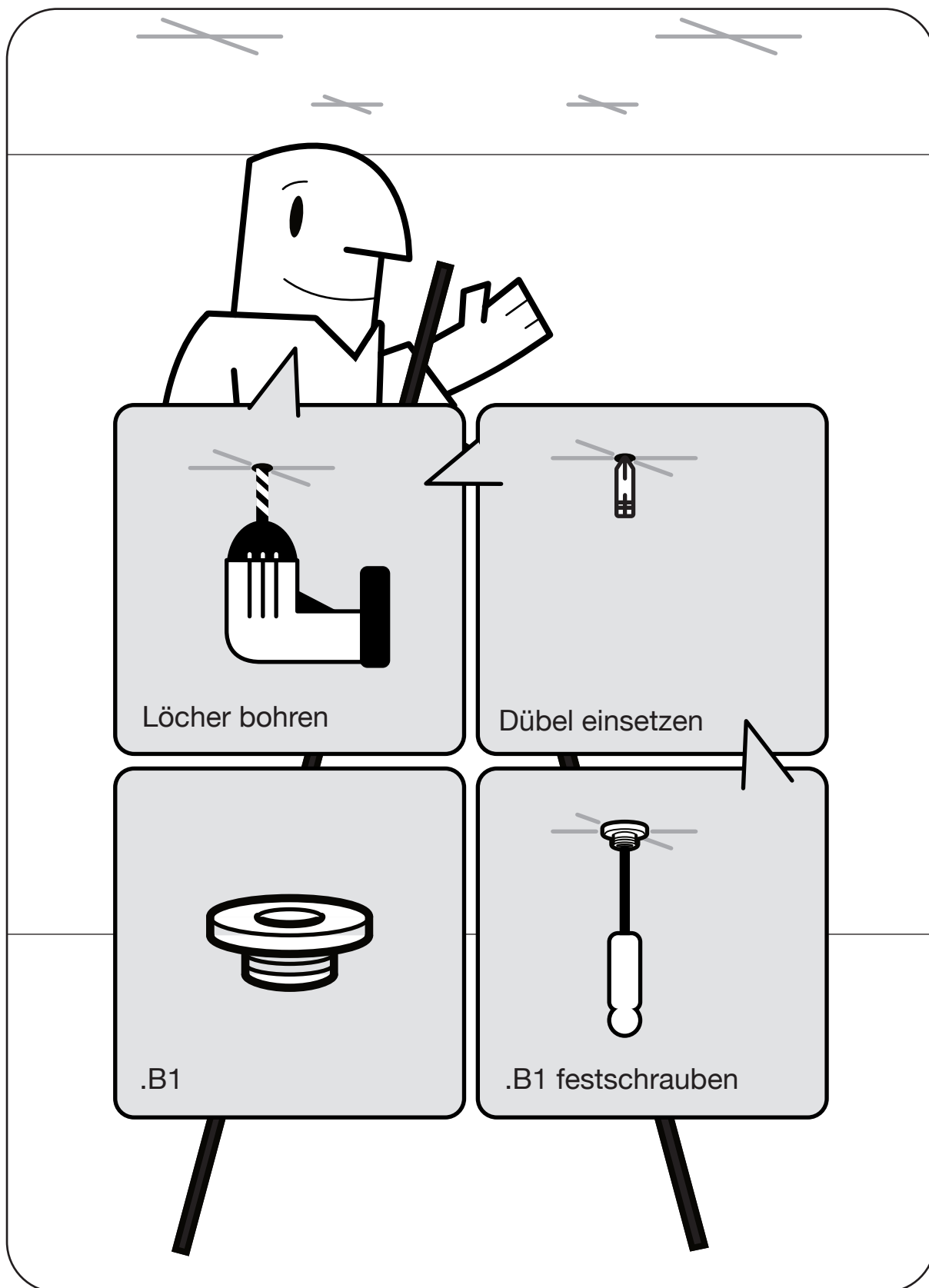
Vlies (.A2) als Bohrschablone an der Decke

ER



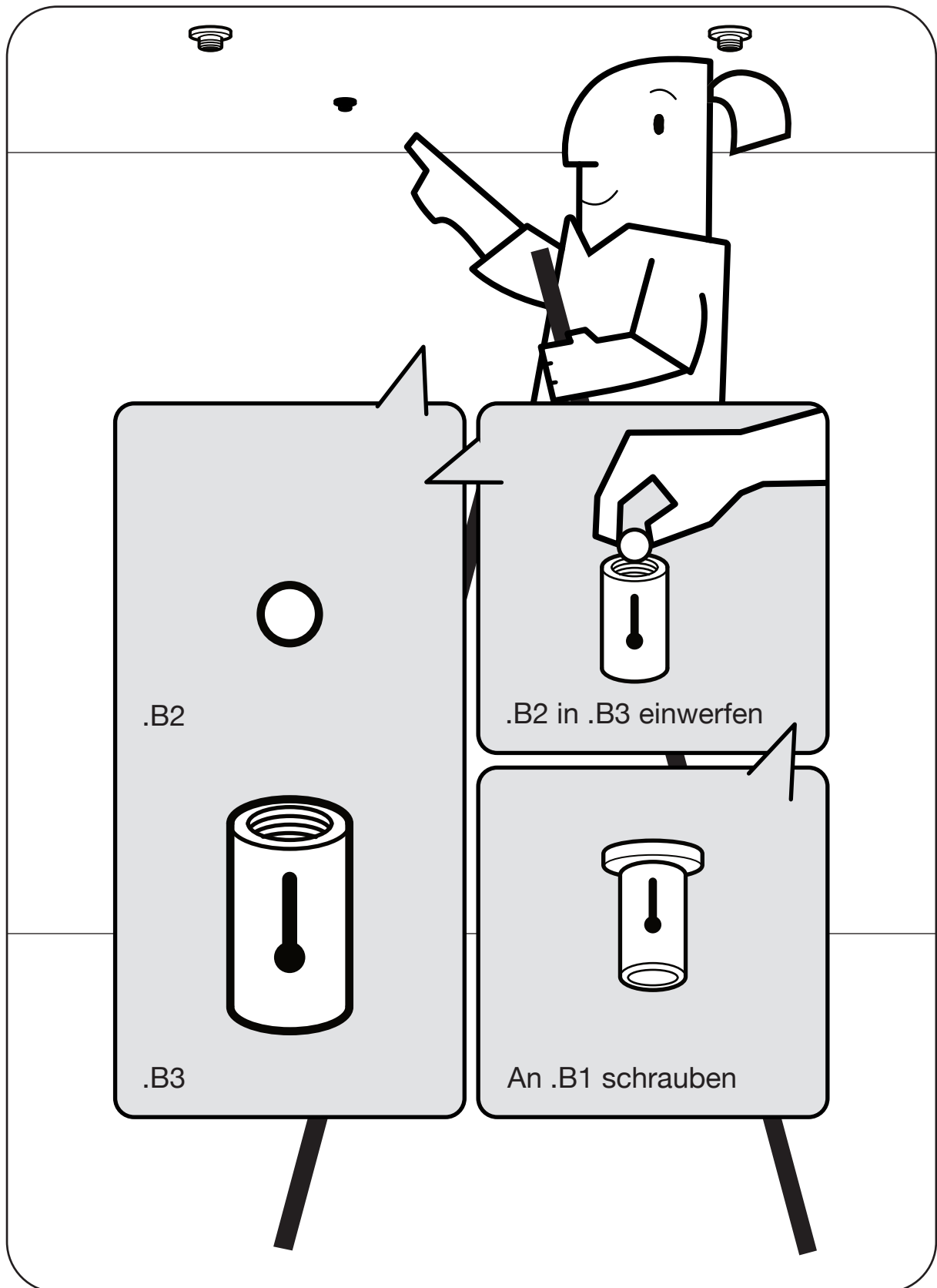
Vermessungslaser (.W3) mit Vlies (.A2) am Boden

# Deckenbefestigungen montieren

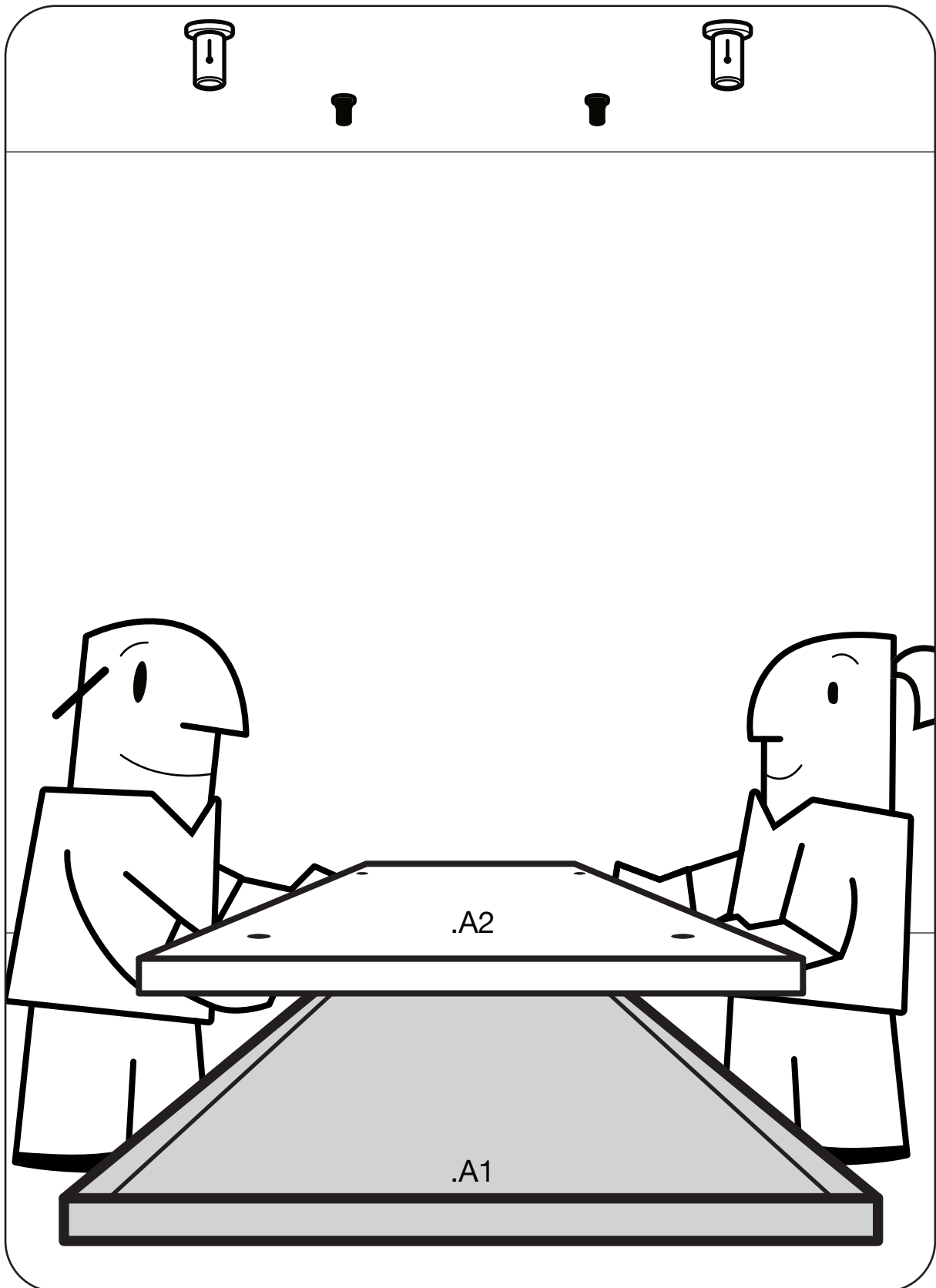




# Magnethalter befestigen

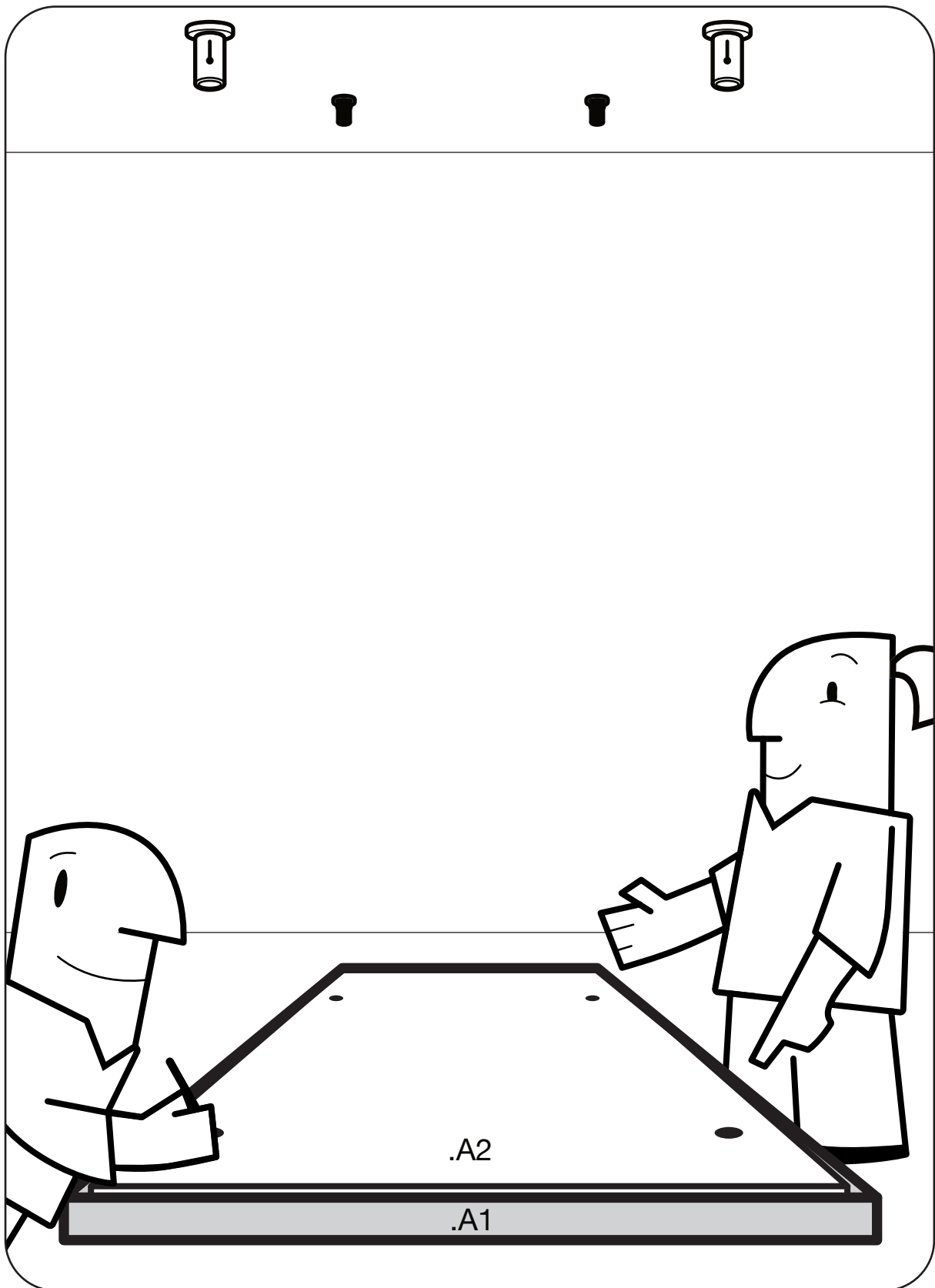


## Deckenabsorber zusammenbauen



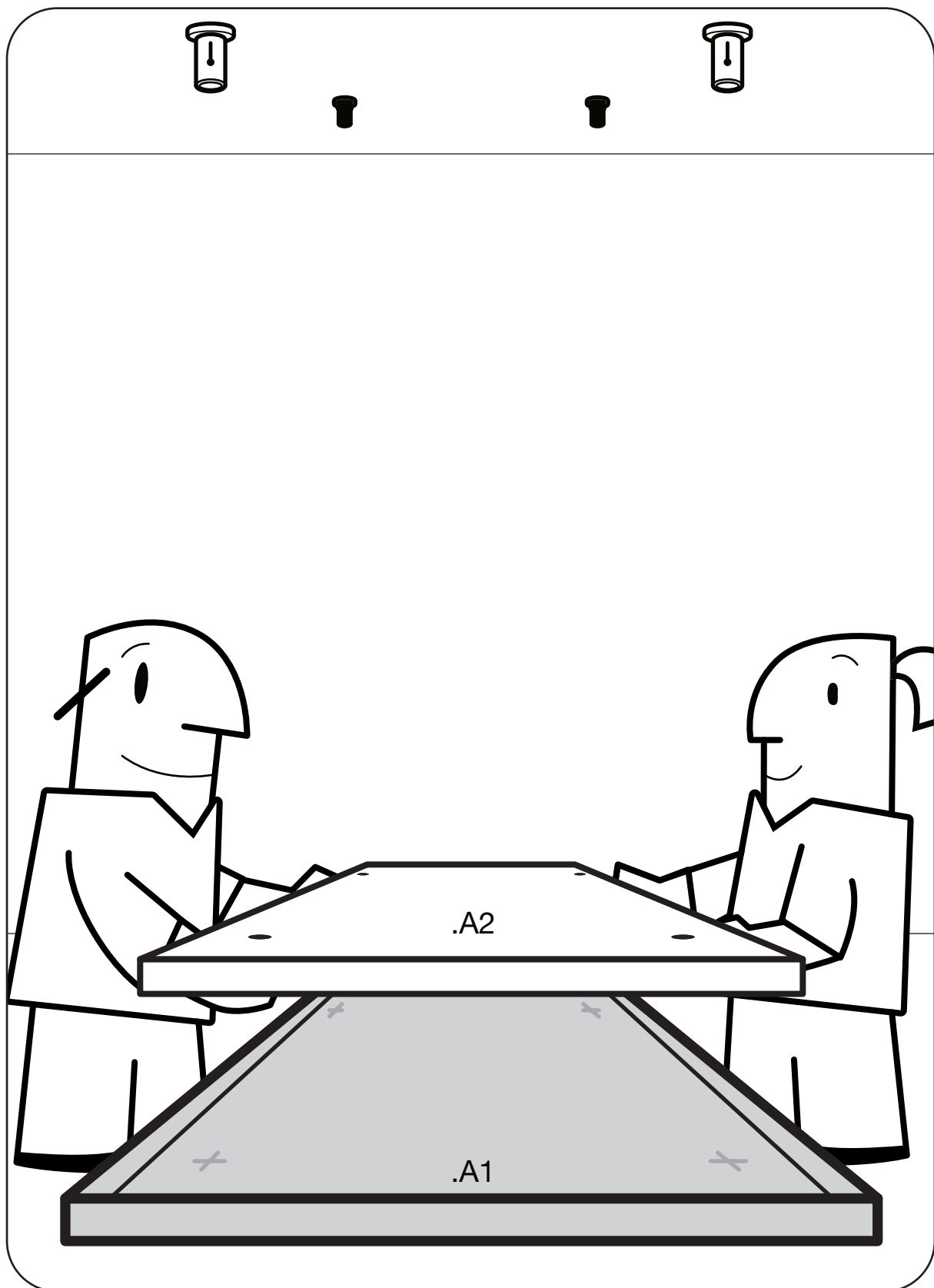
Vlies (.A2) in Filzbox (.A1) legen

# Bohrung anzeichnen



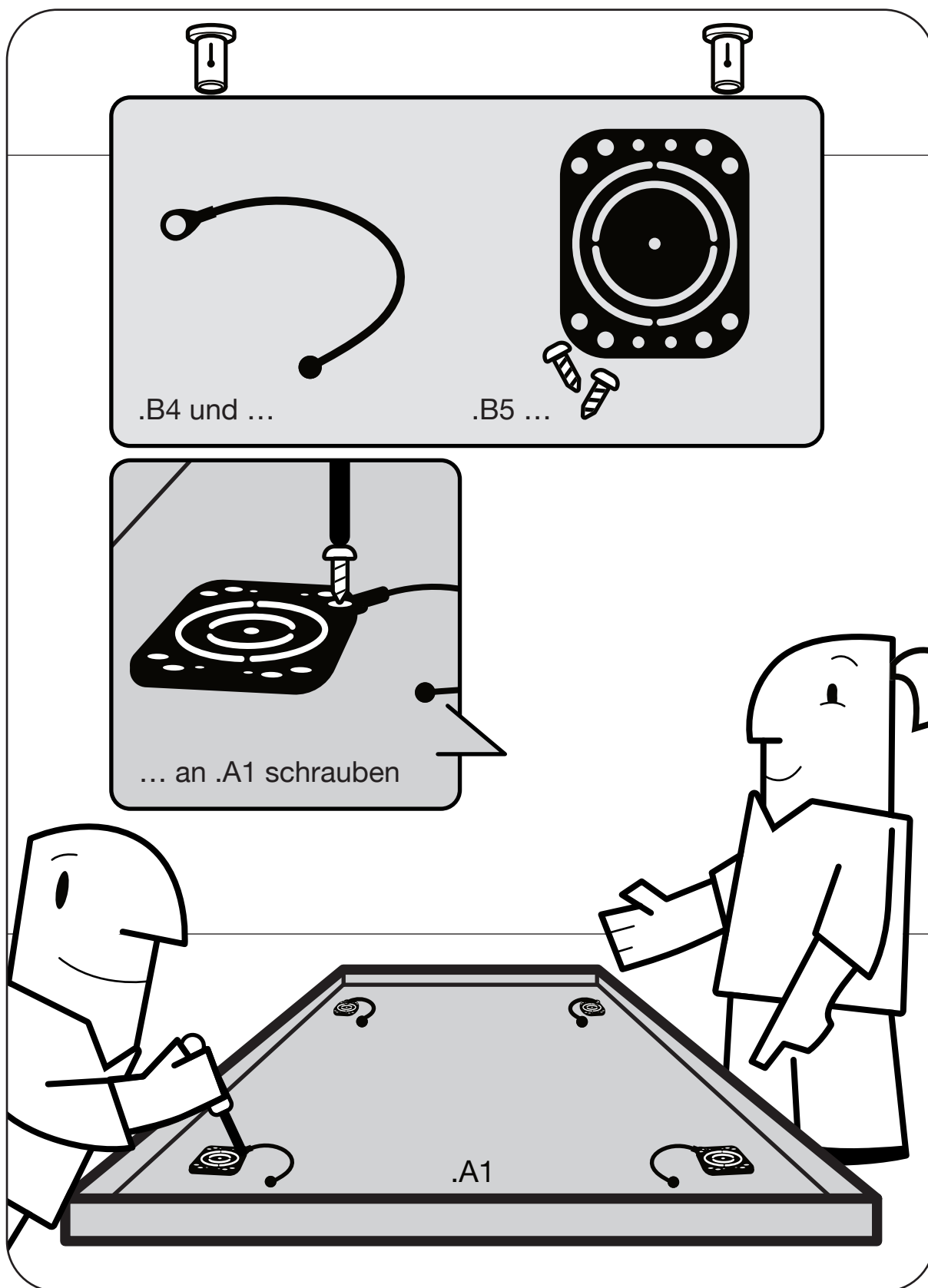
Löcher von Vlies (.A2) auf Filzbox (.A1) zeichnen

## Vlies entfernen

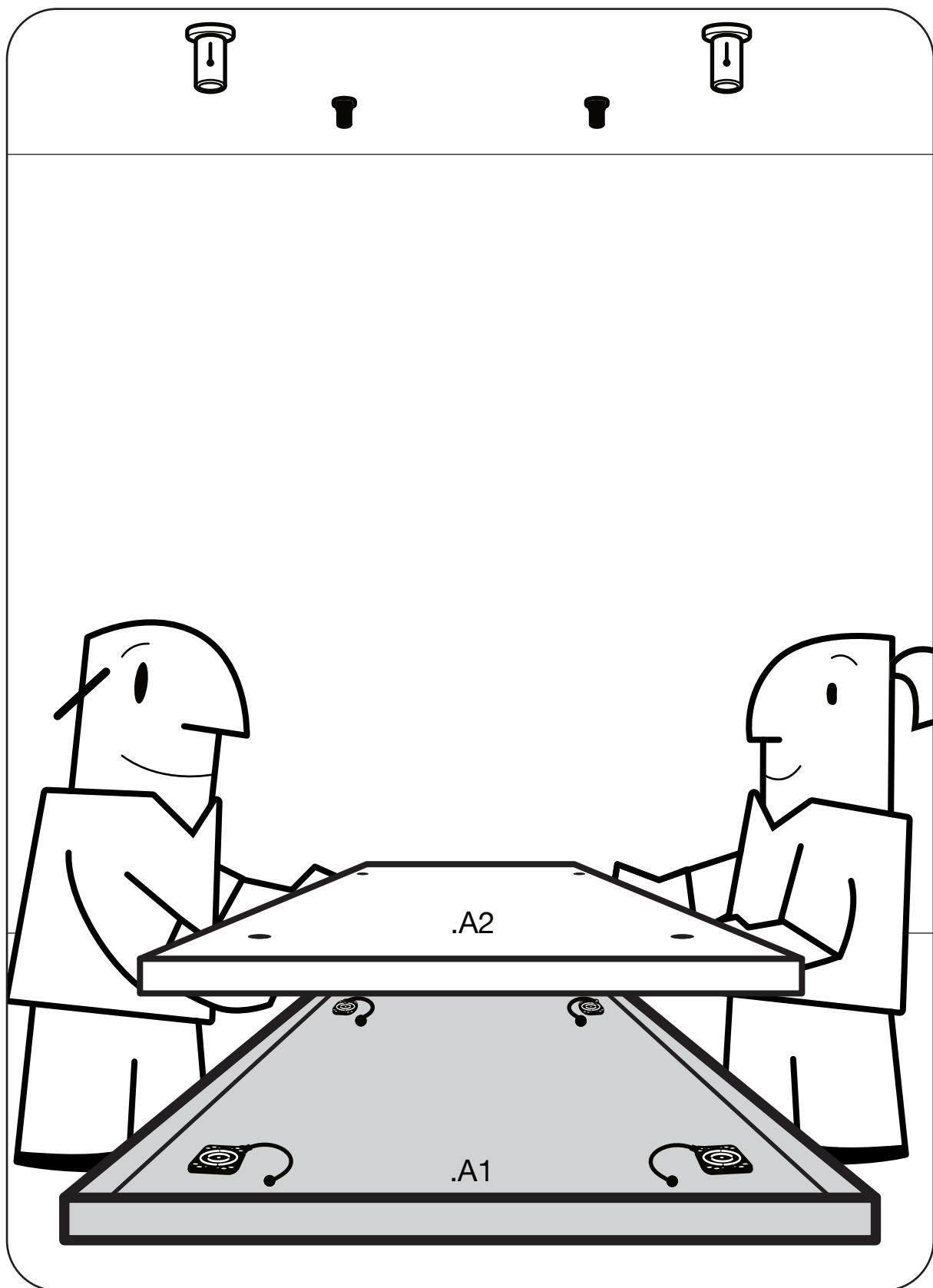


Vlies (.A2) aus Filzbox (.A1) entfernen

# Halterungen mit Fangseilen anschrauben

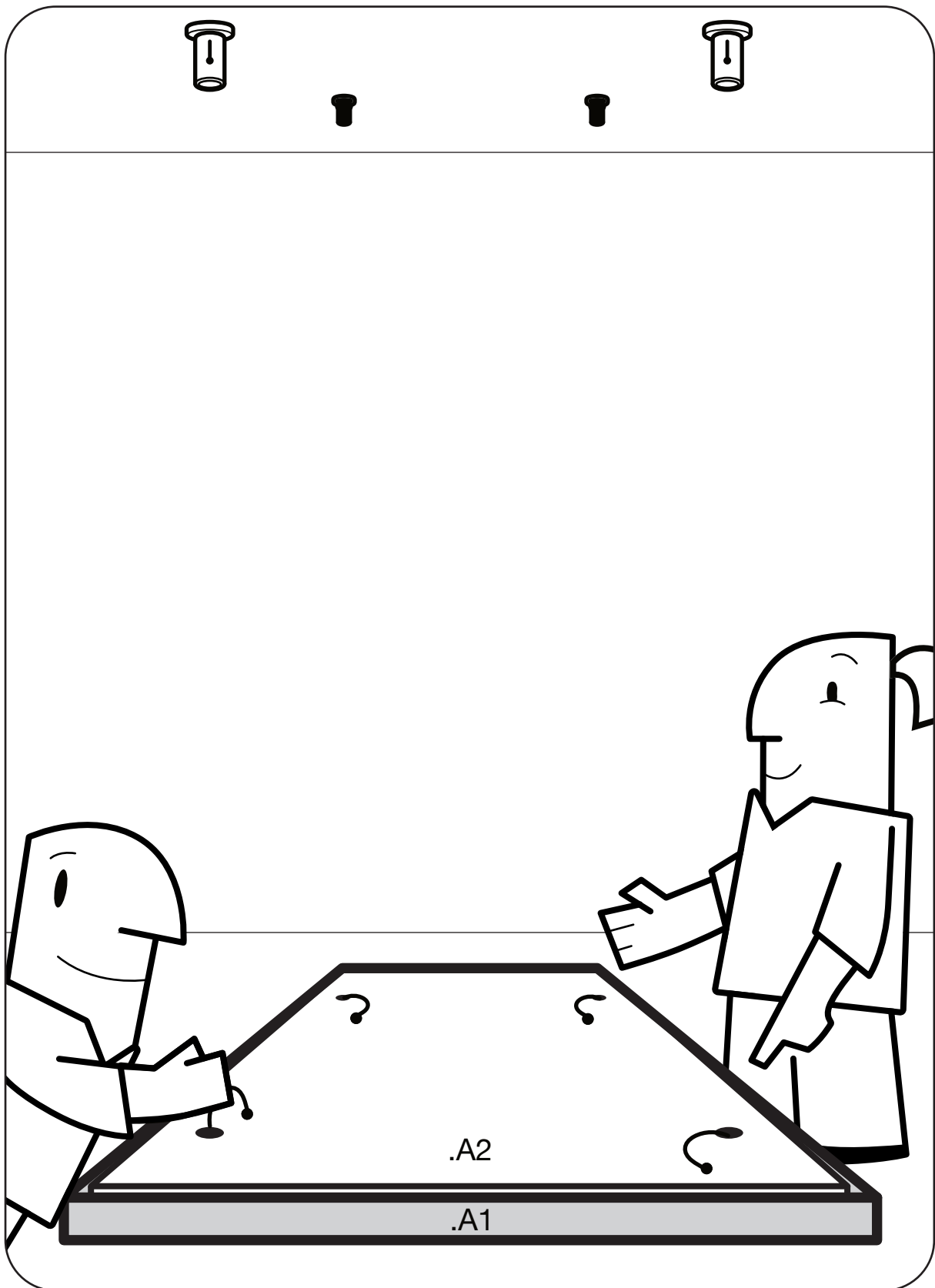


# Vlies einlegen



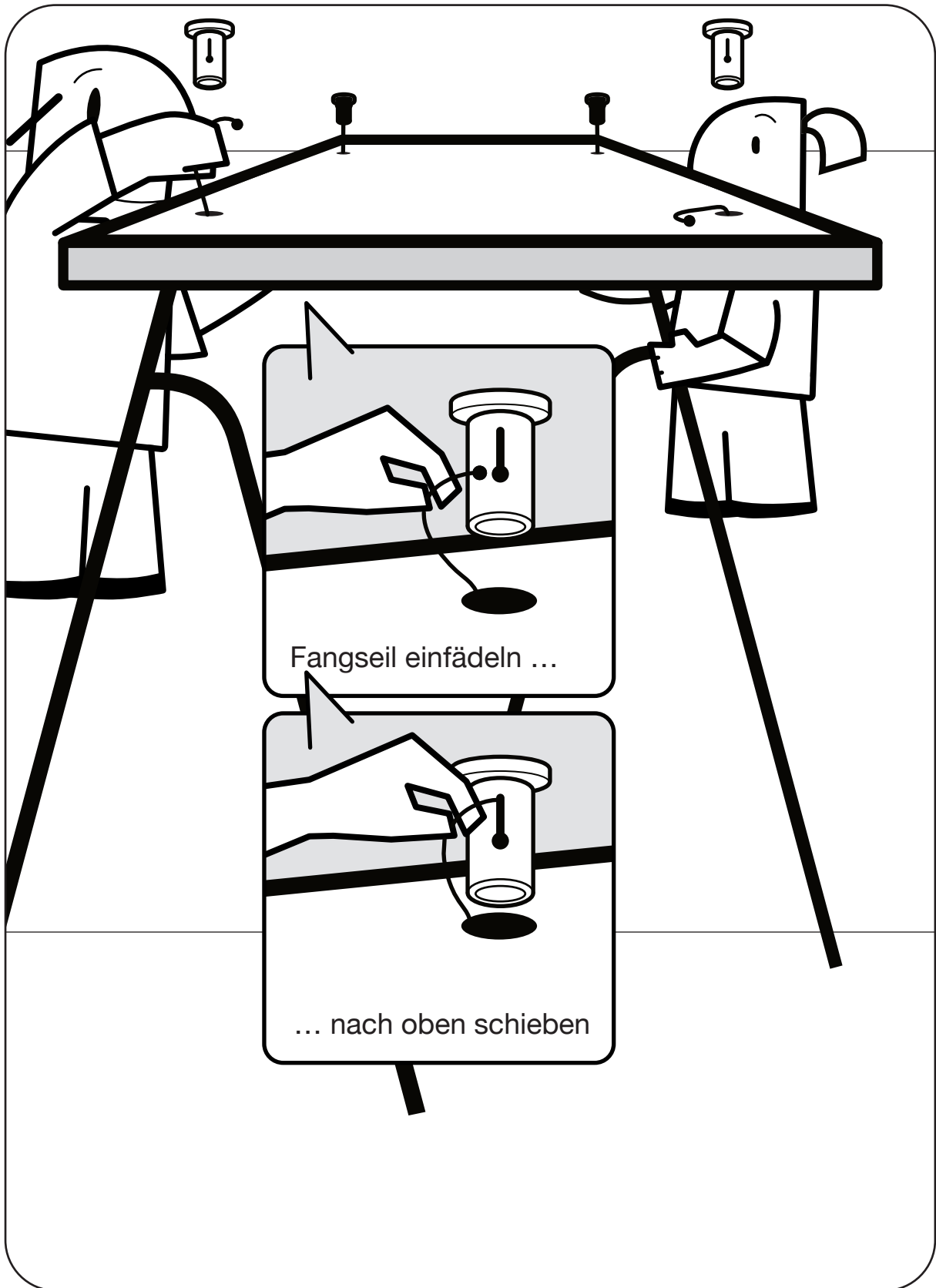
Vlies (.A2) in Filzbox (.A1) legen

# Fangseile durchfädeln



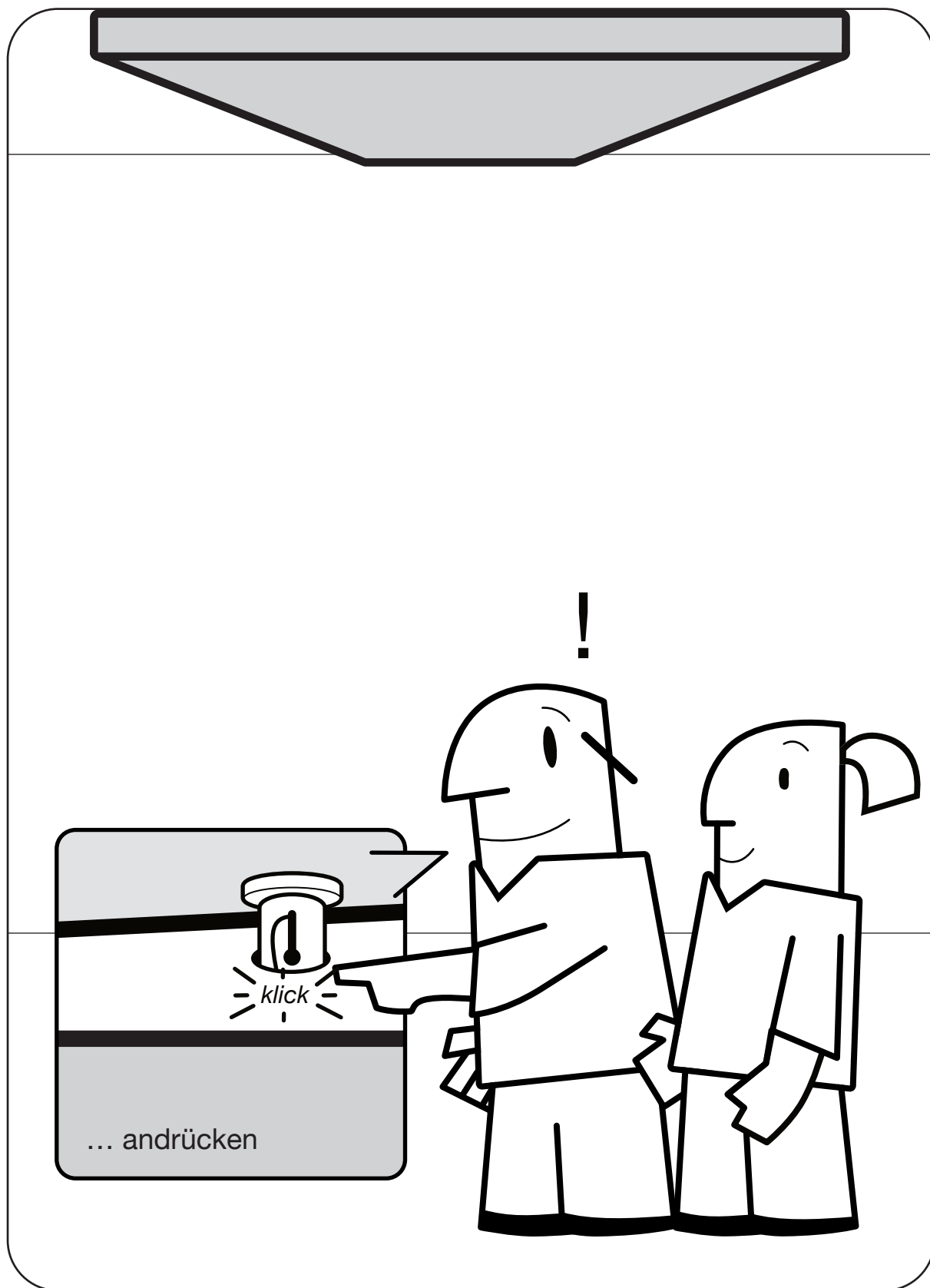
Fangseile durch die Löcher fädeln

# Fangseile einhängen





# Deckenabsorber ...



# Notizen





# **M&K FILZE GMBH**

Gewerbepark Hügelmühle 4  
91174 Spalt  
Germany

Tel.: +49 9175 90778-0  
Fax: +49 9175 90778-50

[info@filzfabrik.de](mailto:info@filzfabrik.de)  
[www.filzfabrik.de](http://www.filzfabrik.de)

## **AKUSTISCHE FILZE**

Tel.: +49 (0) 9175 90778-52  
Mobil: +49 151 407 543 67  
[borowski@filzfabrik.de](mailto:borowski@filzfabrik.de)



**DIE MONTAGE  
ALS  
VIDEO-ANLEITUNG**